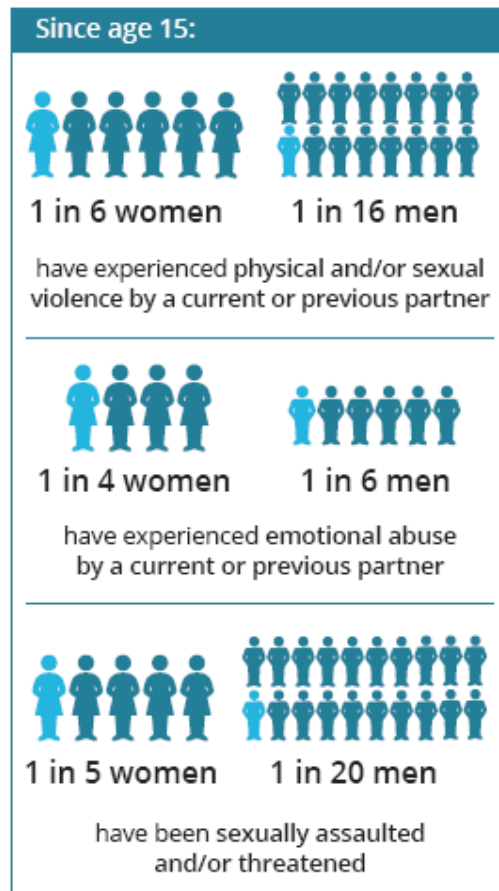


FACT SHEET: Domestic and Family Violence Statistics



AIHW 2019 www.aihw.gov.au

Certain community groups are more vulnerable to domestic and family violence including

- Children younger than 15
- Young women aged 18-34
- Older people
- People with a disability
- People from CALD (culturally and linguistically diverse) backgrounds
- People with disabilities
- People from the LGBTQA+ communities
- Indigenous Australians
- People in rural and remote areas

Fast Facts:

- On average, one woman per week and one man per month is killed by a current or former partner
- The economic cost of Domestic and Family Violence in Australia was \$22 billion in 2015/16 (KPMG)
- On average, 20 people aged 15 and over were hospitalised every day in 2019/20 for an injury due to an assault by an intimate partner or family member
- More than 116,000 people assisted by homelessness services in 2020/21 had experienced domestic or family violence
- 1 in 6 women and 1 in 9 men experienced physical or sexual violence as children (<15 years of age)

Beyond DV



beyonddv.org.au